

STYLE GLAMOROUS LAMINATE

INSPIRED CHOICE

The Sabetis took the lead for their new kitchen from their apartment's original scheme



‘Although the tap catches your eye when you walk into the room, I also wanted one that was going to be easy to work with. The detachable rinse makes it very easy to clean pots.’

MARIAM SABETI



Mariam and Ramin chose chic brown olive-effect units arranged in a U-shape to create a seating area with stools from John Lewis and a sleek Samsung TV. Plinth spotlights create an ambient glow in the evenings while an air conditioning unit overhead keeps the room cool



▲ The stunning black glass Elica OM extractor is one of Mariam's favourite kitchen appliances and has four speeds, washable metal filters and its lid easily opens and closes to turn the hood on and off. 'It looks good and works amazingly well,' she enthuses. 'Plus its design doesn't obstruct you while you're cooking'

Buying a luxury penthouse in one of London's most sought-after areas was just the beginning of a challenging redesign project for Mariam Sabeti and her husband Ramin. 'The property was only about eight years old so all the fixtures and fittings were new and included a stylish walnut kitchen,' recalls Mariam, mum to Saman, 13, and Dara, 11. 'It wasn't that I hated the kitchen, I actually rather liked it, but we wanted to refurbish the entire apartment to make it more conducive to open-plan family living and entertaining guests.'

As part of the redesign, the Sabetis decided to knock through the kitchen and dining room and add an office area under the open staircase. 'Our living room was on the floor above so we felt we needed more space to be together as a family. Also, when we have friends to dinner, it meant I wouldn't be left out of the conversation while I was cooking,' explains Mariam. Being a civil engineer, Ramin was experienced in drawing up plans so he wasted no time sketching out how the finished kitchen layout could look. 'We wanted to have a scheme in mind before we approached any designers so we wouldn't waste time and be talked into things that we didn't need,' says Mariam.

The couple visited three local kitchen companies that Ramin had dealt with previously before deciding to go with Ashley Collins at Halcyon Interiors. 'It was the most competitively priced and I really felt Ashley listened to us when we sat down to discuss our plans,' recalls Mariam.

Having admired the walnut kitchen that was in situ when they bought the property, Mariam and Ramin opted for glossy brown olive-effect cabinetry from the AlnoChic range that would be easy to maintain. Ashley arranged it so that the breakfast bar neatly divides the space between the working zone and the dining area to allow Mariam to cook uninterrupted.

Having lived with previous kitchens, Mariam knew exactly what appliances she needed and opted for a wide oven and a clever induction hob. 'I've had double ovens before and I've only ever used one of them so I didn't want to waste space,' explains Mariam. 'I'd never tried induction heat before and it's been a great investment. We couldn't have gas and induction is a much better option than halogen rings – spills wipe off so easily,' she continues.

To avoid detracting from the sleek lines of the cabinetry, Mariam decided to continue the travertine flooring from the hallway into the kitchen and dining area. 'We made sure that we installed underfloor heating first so the tiles wouldn't be cool to the touch in the winter,' explains Mariam.

The best part of Mariam's new kitchen is she can now interact with her children while she is cooking. 'They sit at the breakfast bar and I can help them with their homework, whereas before I was in the kitchen on my own. We've definitely become closer since we had it installed,' she smiles. **BK**



DESIGN & CABINETS

- Ashley Collins at **Halcyon Interiors**, The Alno Store, 120 Wigmore Street, London W1U 3LS (020 7486 3080) www.halcyon-interiors.co.uk
- Brown olive-effect, hi-gloss laminate furniture from the AlnoChic range by Alno

WORKTOPS

- 30mm Star Galaxy granite. Price per sq m **£450**

SINK & TAP

- BlancoClarion 700-U undermounted single-bowl sink in stainless steel, Blanco **£485**
- BlancoMaster-S Baby single-lever monobloc mixer tap with pull-out rinse in chrome, Blanco **£410**

APPLIANCES (shown)

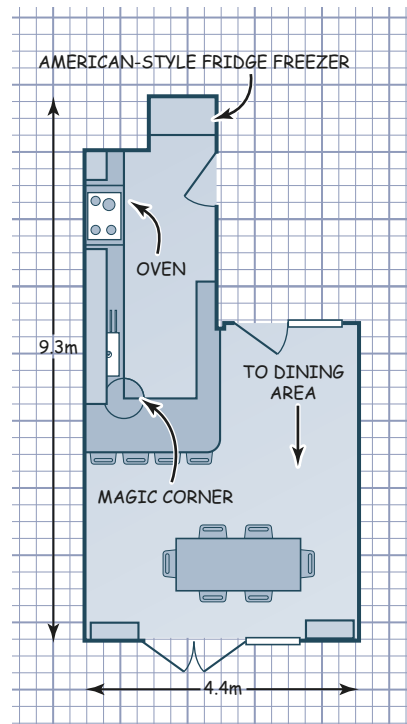
- Built-in single oven, for similar try H5981, Miele **£4,321**
- Four-zone induction hob, for similar try T43H4X2, Neff **£745**
- OM designer extractor hood in black glass, Elica **£1,354**
- American-style fridge freezer, for similar try KA58NP90GB, Siemens **£1,862**

APPLIANCES (not shown)

- Fully integrated dishwasher, Miele **£1,207**

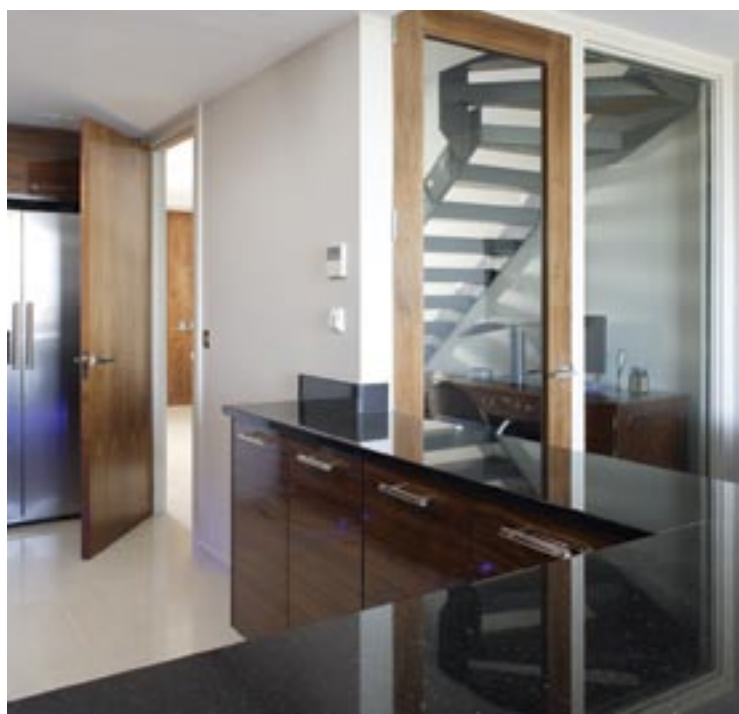
☎ For stockists, see page 144

My best buy... was the Star Galaxy granite worktops. I knew I wanted granite as I liked the style and luxury of it. The bronze flecks on the black background work with the cabinets and they're very easy to clean'



GUIDE PRICE

- Cabinetry only **£13,000**



▲ The wide Miele oven is large enough to meet all the couple's needs when they're entertaining. Positioning it below the counter has freed up more wall space for cabinets and means that the cooking zone is conveniently contained within one area of the room

◀ Mariam and Ramin's kitchen leads directly to the hallway where there is a desk under the stairs. Its location means the couple can catch up with paperwork while not being far from their children

▶ A multipurpose tap has been paired with a bowl that's large enough for soaking pans. To the right, grooves have been carved into the granite to act as a drainer. Undercabinet lights provide worktop and ambient illumination



Mariam chose a carousel unit to make best use of a corner. The turntables rotate slowly when pushed, enabling access to items stored at the back

Unlike her previous scheme, it's now easy for Mariam to interact with guests at the breakfast bar or dining table. Sliding glass doors, flanked by French-style dressers, lead out onto the balcony with views over London. Walls in Stone 3 by Paint & Paper Library echo the travertine floor tiles, which are heated from below. For similar, try Alistair Mackintosh

