

Working all

Minimal design pieces are teamed with white glass and Corian furniture to give this kitchen an ultra clean, modern feel

Report: Felicity Borthwick Photography: Rowland Roques O'Neil Styling: Tamsin Weston

serenities



Dimps wanted crisp, clean lines throughout his and mother Amar's new kitchen, even on smaller elements such as the integrated Corian sinks and Dornbracht taps. "Attention to detail was crucial because, in an all-white setting, every little detail is going to stand out," explains Graham Robinson from Halcyon Interiors



Above: The low ceiling led Dimps to opt for an all-white colour palette, while recessed ceiling lights, rather than pendant lighting, keep the room looking bright and spacious. **Opposite page, top:** Large windows along a side wall allow in plenty of natural light, which is reflected by glossy Corian and glass surfaces and diffused throughout the room. **Bottom:** A large L-shaped island follows the shape of the room to ensure the two areas – food preparation and dining – merge together and work as one continuous space. Corian was used because it has no visible joins, thus enhancing the sense of free-flowing continuity.

Several elements of this contemporary Surrey kitchen immediately catch your eye – its enormous L-shaped layout, the all-white colour palette and a magnificent Corian island, which curves seamlessly across the room. The marriage of these features renders the space both dramatically striking yet elegantly simple.

“The L-shape wasn’t intentional,” explains homeowner Dimps Maker, who has lived in this Tudor-style Croydon house with his mother, Amar, for 15 years. “The space originally consisted of a small, rectangular kitchen and separate formal dining room, which we hardly ever used. So we decided to knock down the adjoining wall and create a large, open-plan kitchen in the remaining area,” he recalls.

This unusual shape, combined with relatively low ceilings, demanded hours of careful planning to ensure the exact positioning of furniture to enable Dimps to achieve his desired result – to create a light, modern and minimal aesthetic, while ensuring the two areas of the room flowed seamlessly together and worked as one integrated space.

“I knew a white palette would keep the space light and bright and the Alno kitchen I spotted on display at Halcyon Interiors had these beautiful white glass cabinet doors, which really added to the clean, contemporary look I wanted,” Dimps reveals. “The room benefits from plenty of natural and artificial light, thanks to several windows in the food preparation zone and a generous sprinkling of recessed ceiling lights.” Plus, by extending the island around the corner at one level with the help of designer Graham Robinson from Halcyon, he has successfully fused the two areas together using Corian throughout to enhance the sense of continuity and create the illusion of one large expanse of material that seamlessly follows the lines of the room.

“The lines in this kitchen are very important because, being all white, they really stand out,” Graham elaborates. “This is why we decided to keep all elements crisp and angular, even on the smallest of details such as the Dornbracht tap and sloping integrated sinks.”

As well as enhancing the minimal, flowing look that Dimps craved, another desire facilitated an island of enormous proportions pitched on one level – essentially Dimps wanted to recreate the fun and sociable environment of a Japanese restaurant, where guests could sit and watch while food was prepared in front of them. And with the impressive ▶



list of appliances this kitchen boasts including a teppan, barbecue grill and steam oven, there's plenty of scope for creative cooking.

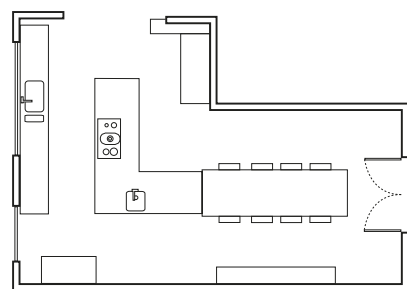
"We didn't buy appliances just for the sake of having them, but we did want a complete kitchen with the flexibility to cook whatever we liked," he enthuses, "and because all the appliances are integrated into the walls or work surfaces, such as the downdraft extractor that disappears into the island at the touch of a button, the room remains simple and uncluttered."

Dimps also wanted the capacity to seat up to eight people at the island and use it as a formal dining table. As such, it was essential that seating here was extremely comfortable and Halcyon Interiors suggested Tonon's Wave stools in white to match the surrounding all-white aesthetic. Yet, in cool contrast to the room's neutral scheme is the dark, luxurious flooring from Porcelanosa – a 'wood-effect' porcelain tile carved into long, thin strips to resemble floorboards.

In the dining zone, the lack of wall units creates an expanse of whitewashed walls, which are broken up by colourful accessories. "I don't like wall cabinets generally, but certainly in this space it would have made the room seem a lot smaller," Dimps says.

"In fact, I'm really pleased with the use of space throughout the whole kitchen," Dimps concludes. "It is now a much more sociable and versatile area and instead of using just some of the space some of the time as we did previously, we now use all of the space all of the time." KBB

Above: The capacious L-shaped island is the focus for the kitchen space – its surfaces providing plenty of space for both cooking and dining with friends **Below left:** The Gutmann Futura downdraft extractor is entirely concealed within the island's surface to maintain the room's minimal, uncluttered look. However, at the touch of a button, it rises up behind the hob and is instantly ready to use **Middle left:** Vibrant accessories such as this Guzzini knife block from Formahouse have been used to introduce splashes of colour throughout the room and break up the all-white colour palette **Middle right:** A Zip Hydro Tap provides instant boiling and cold filtered water, ensuring that cooking and preparing food in this kitchen is made as simple as possible **Far right:** The circular teppan offers on-the-counter cooking to impress guests and is placed conveniently next to the sink in the prep area



SourceBook

DESIGN

Halcyon Interiors (020 7486 3080 or www.halcyoninteriors.co.uk)

KITCHEN

Cabinetry Art Pro-White glass-fronted cabinets with aluminium trim by Alno, Halcyon Interiors, as before
Worktops Glacier White with bespoke moulded sinks, Corian (0800 962116 or www.corian.com/uk)

Appliances Oven, steam oven, barbecue plate, wok burner, and gas and induction hobs, Gaggenau (0870 125 4500 or www.gaggenau.com); Teppan yaki, dishwasher and fridge and freezer, Miele (01235 554455 or www.miele.co.uk)

Extractor Futura downdraft extractor by Gutmann, Halcyon Interiors, as before

Boiling tap Hydro Tap, Zip Heaters (0870 608 8888 or www.zipheaters.co.uk)

Brassware Dornbracht (024 7671 7129 or www.dornbracht.com)

Barstools Wave design, Tonon (+39 0432740740 or www.tononitalia.com)

Flooring Wood effect porcelain tile, Porcelanosa (0800 915 4000 or www.porcelanosa.co.uk)

Artwork 'Keep Calm and Carry On' screen print, Keep Calm Gallery (www.keepcalmgallery.com)

Knife block Guzzini, Formahouse (020 8646 3883 or www.formahouse.co.uk)

Mugs Pantone, W2products (020 7922 1444 or www.w2products.co.uk)

Accessories Chopping board, Joseph Joseph (020 7261 1800 or www.josephjoseph.com);

Tray, Heal's (020 7636 1666 or www.heals.co.uk);

Serving bowl, glass bowl and hi-ball glasses, Habitat (0844 499 1111 or www.habitat.co.uk)

COST

A similar kitchen would cost around £57,000 including installation

Below: Dimps and Amar wanted a variety of appliances that would afford them total cooking flexibility. The hob area alone offers gas and induction cooking, a wok burner, barbecue grill plate and a circular teppan by Miele. They have also invested in both a traditional oven and steam oven **Bottom right:** Sinks are formed from the same composite as the worktop for seamless style and are placed below the light-filled windows **Right:** Storage is kept at base level enhancing a feeling of light and space and, here, facilitates formal dining

